

Historic, Archive Document

Do not assume content reflects current scientific knowledge, policies, or practices.

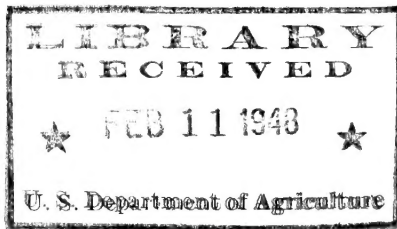
02, 13
F. H. WOODRUFF & SONS, Inc.

MILFORD, CONNECTICUT

"Seed Growers"

Winners

FOR
MARKET
GROWERS
AND
HOME
GARDENERS



SEC. 562, P. L. & R.

U. S. DEPT. OF AGRICULTURE
WASHINGTON, 25, D. C.
LIBRARY

M

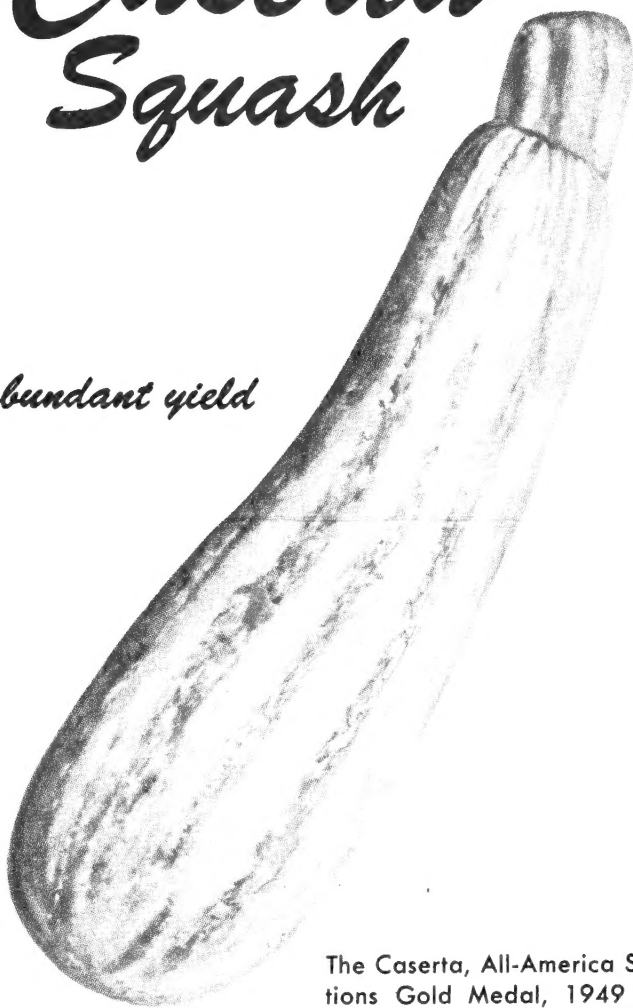


Caserta Squash

Produces earliest of all market squash . . . in abundant yield

ON FOUR COUNTS IT'S A WINNER FOR MARKET GROWERS

1. Abundant Yield plus Unusually Early Yield — an invaluable combination. Produces 10-14 days before earliest lines. Thirty fruits per plant not unusual. As high as 70 because of high initial female flower ratio maintained through season. Mature fruits are 15-18 in. long by 4½-5 in. wide.
2. Attractive Color plus Desirable Shape for top market appeal. Harvest freshness in firm skin and crisp, bright-green overall color—retained long beyond picking. Straight and cylindrical for easy, smart packaging. Customer satisfaction in appetizing, vitamin — abounding serving.
3. Strongly Resistant to Violence of Storm. Leaves are deeply cut, stems are strong and husky to resist high velocity winds. Plant base accessible to drying wind and sun, thus preventing post-storm rot of immature fruit.
4. Simplified Cultivation, Spraying and Harvesting. A bush plant, hence suitable for either drill or hill planting. Erect, runnerless habit enables proper cultivation and spray. True bush habit permits closer planting without cultivator damage through season.



The Caserta, All-America Selections Gold Medal, 1949 . . . developed by Dr. Lawrence C. Curtis . . . seed of the 1948 crop obtainable only from Woodruff. Write for full particulars!

WINNERS *Bred in the Seed* FOR MARKET GROWERS

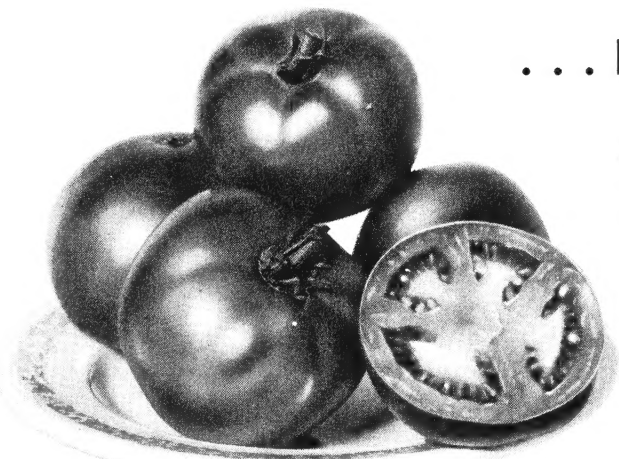
LAKELAND TOMATO

. . . bred to the needs of green-wrap growers

Lakeland is a notably heavy producer, second early variety to follow extra-early types, setting well in either wet or dry growing season. First fruit averages 6 oz, later 4-5 oz. Has exceptional depth—excellent slicer. Stem and blossom scars small. Free from radial and circumferential cracks.

Pickers can better determine stage of maturity—the Lakeland indicates readiness for green-wrap picking by turning from apple green to a paler green! Reddens uniformly up to stem scar for re-pack processors.

And Lakeland further obviates spoilage with good thick internal walls and heavy exterior wall—another advantage for green-wrap growers in that fruit holds up under shock in shipping.



SOUTHLAND TOMATO

. . . bred in and for the South

Equal in yield and quality to standard varieties—with the special characteristic of near immunity to fusarium wilt, providing an exceptionally hardy, dependable, utility type for the South particularly. Also notably resistant to some forms of early blight and at least one form of late blight; collar and blossom end rot.

Developed by the Regional Vegetable Breeding Laboratory at Charleston, S. C.

PLANT: Abundant foliage similar to Marglobe—yet slight differences in bush shape, leaf pattern and color make it easily identified.

FRUIT: Average fruit is $2\frac{3}{4}$ in. wide by $2\frac{1}{8}$ in. deep and .34 lb in weight.

MATURITY: In Rutgers' season—or a few days earlier.

WRITE WOODRUFF

for full particulars

WINNERS *Bred in the Seed* FOR MARKET GROWERS



WOODRUFF'S

Peppers

Featuring the Illinois F-5 — bears consistently throughout the season!

ILLINOIS F-5 PEPPER

A newcomer with the exceptional quality of always bearing maturing fruit, instead of maturing some all at once, then dropping them before maturing another set.

FRUIT: 3 and 4 lobed, Ruby King type. Length of $4\frac{1}{2}$ -5 in. Diameter at stem end of $3\frac{1}{2}$ -4 in. Medium thick walls. *Best crimson-red observed.*

VINE: Compact. Heavy foliage.

MATURITY: Approximately ten days ahead of Ruby King.

YIELD: Heavier than Ruby King. *Forty-five fruits will fill a bushel!*

YELLOW SWEET PEPPER

Prolific bearer of firm flesh, mild pendant fruits of the California Wonder type.

FRUIT: Generally 4 lobed, occasionally producing a 3 lobed fruit. Length averages 4 in. with shoulder width of about 3 in. Flesh is firm, about $1\frac{1}{6}$ in. thick and exceptionally mild. In "green stage" fruit is rich canary yellow; matures from scarlet orange to brilliant, glossy crimson.

PLANT: Stands 18-20 in. tall, bearing sturdy, upright fruit. Rich deep foliage.

MATURITY: Approximately 75 days.

YIELD: Exceptionally large.

WINNERS *Bred in the Seed* FOR MARKET GROWERS

WOODRUFF'S

Lettuce

CRISP

COMPACT

GARDEN FRESH GREEN



PREMIER GREAT LAKES ALL-AMERICA SELECTION Bronze Medal
... bred for upland soils, early maturity

Transplanted or seeded, Premier Great Lakes may be planted in succession for a summer crop in widely diversified areas. An individual plant selection by the Pennsylvania Agriculture Experiment Station from originator's Great Lakes stock.

PLANT: Has produced better than 90 per cent marketable heads. Produces unusually solid, almost round heads—up to 7 in. diam, 2-lb weight. Outer leaves are somewhat flattened, smooth, without ruffled margins. Greater uniformity, little ribbiness.

MATURITY: Produces 7-10 days earlier than standard Great Lakes.

NOTE: Variety is slow to bolt and is quite resistant to tipburn.

PENNLAKE ALL-AMERICA SELECTION Bronze Medal

... bred for abundant, early summer yield dependability

Developed from a cross of Great Lakes and Imperial 847, the Pennlake combines solidity and tipburn resistance of the former with large head size of latter. Great uniformity, hence high percentage of marketable heads at first cutting.

PLANT: Crisp, dark green foliage lacking ribbiness. Compact heads with rich green interior are completely protected from scald by broad enfolding wrapper leaves. Heat tolerant—will not bolt.

ADAPTABILITY: Will do well as early summer or fall crop. Adapted to upland or muck soils throughout the United States.

MATURITY: In season with Great Lakes.

NOTE: Supply is limited.

PROGRESS

... all-around, eastern-proved early variety

Progress is an early, dark green, thick-leaved, heavily savoyed, tipburn-resistant, crisp head variety of good flavor and high quality. Lacks bitter flavor near heart common to most varieties. The result of a selection from a cross of Imperial 44 and an un-named hybrid, Progress has been proved for early production in eastern states, notably New Jersey.

PLANT: Darker green, thicker-leaved, more savoyed than Imperial 44. Denser heads, more tipburn-resistant and of better quality.

MATURITY: 80 days. Bolts at an intermediate date.

NOTE: Supply is limited.

WRITE WOODRUFF

for full particulars

WINNERS

Bred in the Seed

FOR MARKET GROWERS

WOODRUFF'S *Sweet Corn Hybrids*

Two new winners *Bred in Seed*
for market growers!

New Proven Strains
for more
abundant yield . . .

GOLDEN SECURITY

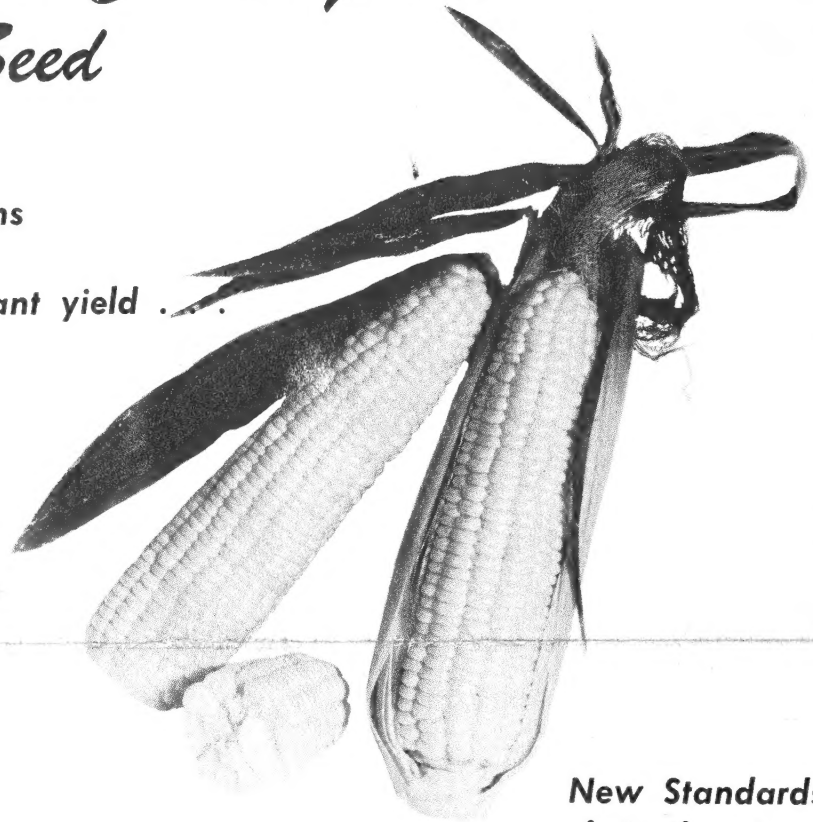
A new Woodruff introduction as a midseason variety of supremely abundant yield for market growers. High, large, cylindrical ears—well-filled, 14-16 rows, slightly tapered tip. Large percentage of stalks bear two, occasionally three ears. Bright golden yellow kernels, medium width, good depth, tender and excellent quality.

MATURITY: Golden Cross Bantam season.

VICTORY GOLDEN

A new Woodruff introduction for main market crop. Sturdy stalk exceeds Golden Cross Bantam in height. Drought tolerant. Long, uniform, well-placed ear. Good weight. Medium width. Kernel excellent quality, tender, golden yellow in color. Resists Bacterial Wilt. Has low smut frequency.

MATURITY: 86 days.



New Standards
of Uniformity
for more dependable yield!

Write Woodruff for full particulars on these and the entire wide line of Woodruff hybrid winners!

Look to Woodruff for the *Adapted Seed*—bred through patient selective breeding to give you the one seed suited to the growing conditions of your locality: *The Adapted Seed*—bred for your profit!

WINNERS *Bred in the Seed* FOR MARKET GROWERS

F. H. WOODRUFF & SONS, Inc.
MILFORD, CONNECTICUT



TOLEDO, OHIO • DALLAS, TEXAS • ATLANTA, GA. • SACRAMENTO, CAL. • MERCEDES, TEXAS